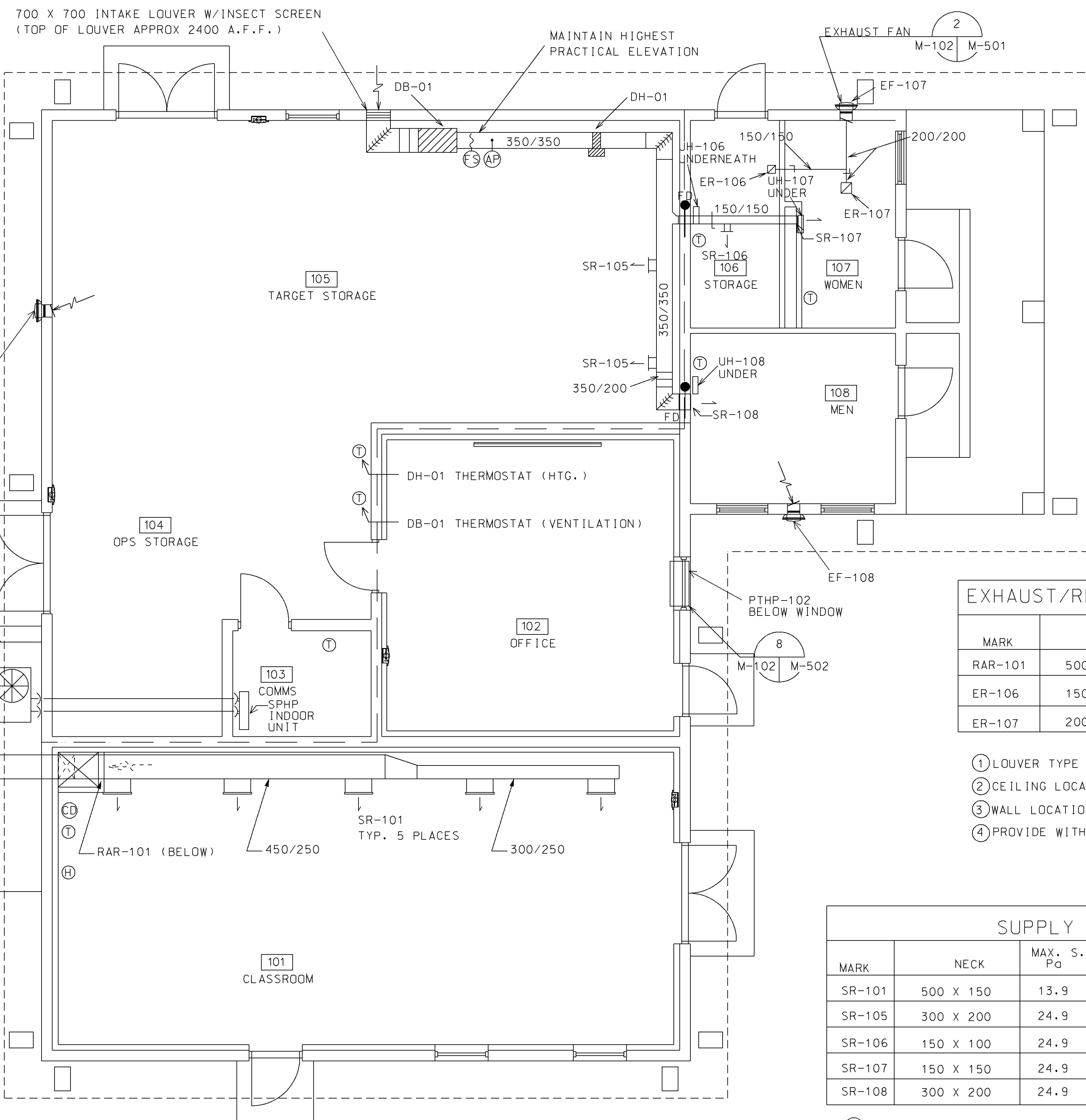




1 2 3 4 5



- NOTES:**
1. ALL DUCTWORK SHALL BE INSULATED IN ACCORDANCE WITH 23 07 00.00 22 MECHANICAL INSULATION.
  2. INSTALL FLEXIBLE DUCT CONNECTORS BETWEEN ALL EQUIPMENT AND DUCTWORK.
  3. MECHANICAL/MASONRY/BUILDING CONTRACTORS SHALL COORDINATE PENETRATIONS AND DUCT ROUTINGS. DUCTWORK ROUTING SHALL BE COORDINATED WITH TRUSS DESIGN.
  4. ALL THERMOSTATS/HUMIDISTATS ARE TO BE INSTALLED 1500 ABOVE FLOOR.
  5. ALL DUCTWORK ELBOWS SHALL BE FITTED WITH TURNING VANES.
  6. INSTALL MANUAL BALANCING DAMPERS IN DUCTWORK AS SHOWN.

**EXHAUST/RETURN REGISTER SCHEDULE**

MARK	SIZE	MAX. Pa	AIRFLOW L/s	NOTES
RAR-101	500 X 500	12	533	① ③ ④
ER-106	150 X 150	12	24	② ④
ER-107	200 X 200	12	48	② ④

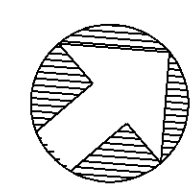
- ① LOUVER TYPE
- ② CEILING LOCATION
- ③ WALL LOCATION; EGGCRATE
- ④ PROVIDE WITH OPPOSED BLADE DAMPER CONTROL

**SUPPLY DIFFUSER SCHEDULE**

MARK	NECK	MAX. S.P. Pa	BLOW PATTERN	THROW (M)	AIRFLOW L/s	NOTES
SR-101	500 X 150	13.9	SIDE OUTLET	3 - 3.7	136	WALL SUPPLY ①
SR-105	300 X 200	24.9	SIDE OUTLET	4 - 5	165	WALL SUPPLY ②
SR-106	150 X 100	24.9	SIDE OUTLET	4 - 5	24	WALL SUPPLY ②
SR-107	150 X 150	24.9	SIDE OUTLET	4 - 5	48	WALL SUPPLY ②
SR-108	300 X 200	24.9	SIDE OUTLET	4 - 5	165	WALL SUPPLY ②

- ① PROVIDE WITH DOUBLE BLADE ADJUSTABLE PATTERN, FRONT BLADES CONTROL DROP & OPPOSED BLADE DAMPER CONTROL
- ② PROVIDE WITH DOUBLE BLADE ADJUSTABLE PATTERN FRONT BLADES CONTROL SPREAD & OPPOSED BLADE DAMPER CONTROL

**COMBINED FACILITY  
HVAC PLAN-MPMG**  
SCALE 1:50



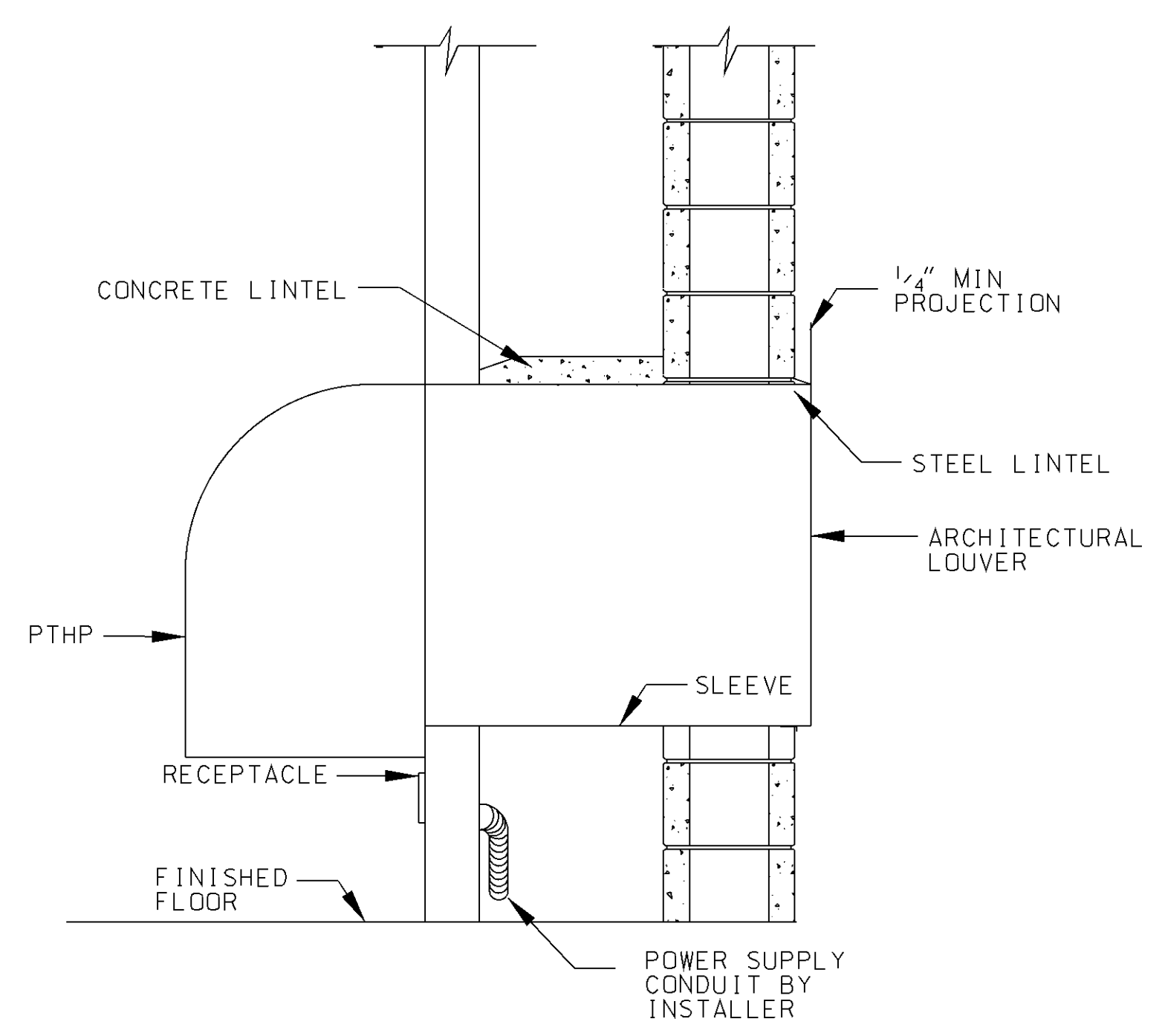
	DATE
	SYN
	DESCRIPTION
US Army Corps of Engineers Engineering and Support Center Huntsville, Alabama	
SUBMITTED BY	
FIRM MEMBER	DATE
X XXXXXXXXX	
ACTIVITY - SATISFACTORY TO DATE	
XX/XX/XX	
APPROVED	
FOR COMMANDER NAVFAC	
DESIGNER	DATE
CHK TCM	DR REJ
DESIGNER	DC
REVIEWED BY	
DC	
DESIGN MANAGER	
FIRE PROTECTION	
BRANCH MANAGER	
ENGINEERING DIR.	
DEPARTMENT OF THE NAVY NAVAL FACILITIES ENGINEERING COMMAND ~ MID-ATLANTIC MARINE CORPS NORTH CAROLINA IPT NAVAL STATION - NGRDOLK - VIRGINIA MARINE CORPS BASE MULTI-PURPOSE MACHINE GUN RANGE & ENGINEER TRAINING COMPLEX CAMP LE JEUNE, NC COMBINED FACILITY HVAC PLAN-MPMG	
CODE ID. NO. 80091	SIZE D
SCALE	
MAXIMO NO.	
JOB ORDER NO. P-831	
SPEC. NO. N/A	
CONSTR. CONTR. NO. N/A	
NAVFAC DRAWING NO. 12547657	
SHEET 138 OF 431	
<b>M-102</b>	
DRAWING REVISION: 01 AUGUST 2004	

REVDATE PLOTTED: 14-DEC-2009 FILENAME: M-102 COMBINED FACILITY HVAC PLAN-MPMG.DGN SUBMITTAL - CORRECTED FINAL

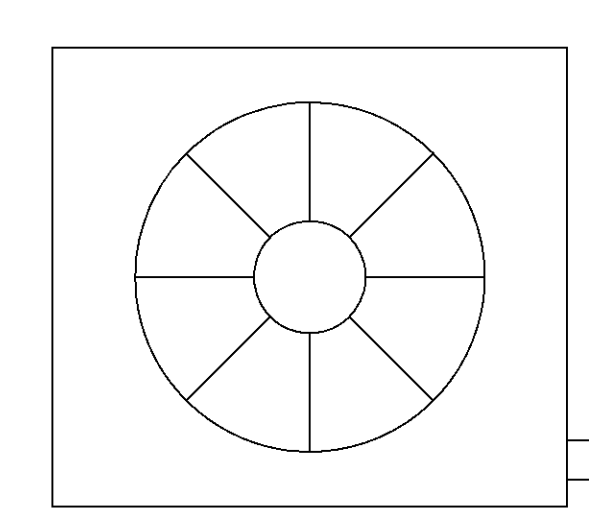
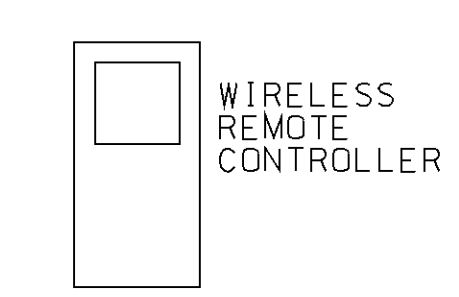
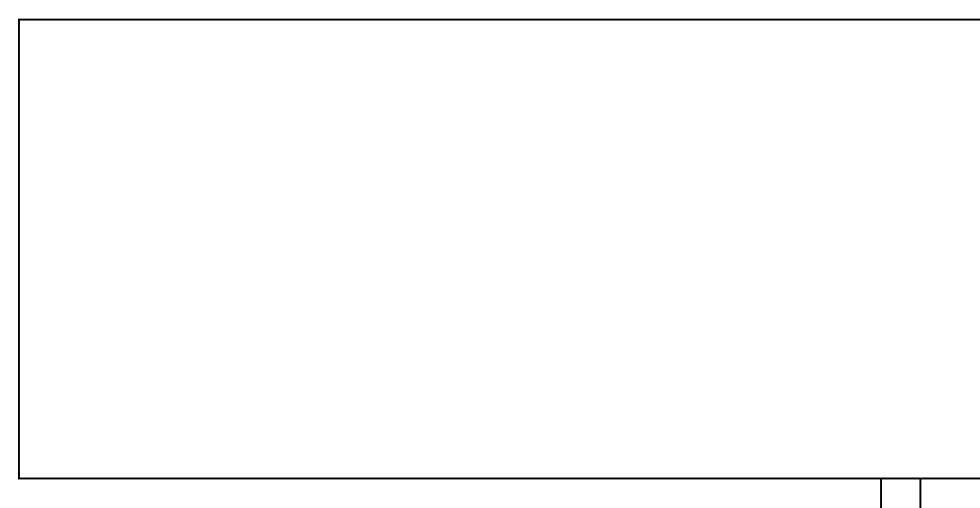
1 2 3 4 5








8 PTHP DETAIL  
M-102 M-502 NOT TO SCALE

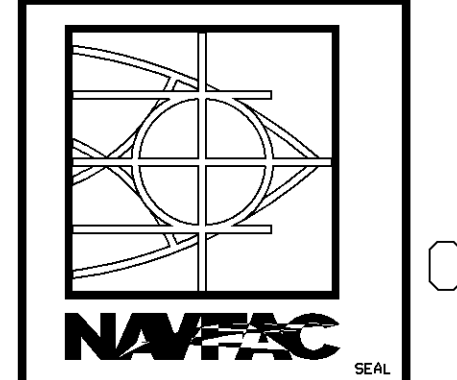


9 SPHP DETAIL  
M-102 M-502 NOT TO SCALE

REFRIGERANT PIPING, FITTINGS, POWER AND CONTROLS PER UNIT MANUFACTURER

SYN	DESCRIPTION	DATE	APPR

  
US Army Corps  
of Engineers  
Engineering and Support Center  
Huntsville, Alabama



SUBMITTED BY \_\_\_\_\_

FIRM MEMBER \_\_\_\_\_ DATE \_\_\_\_\_

APPROVED \_\_\_\_\_  
X XXXXXXXXX  
ACTIVITY - SATISFACTORY TO DATE XX/XX/XX

APPROVED \_\_\_\_\_

FOR COMMANDER NAVFAC \_\_\_\_\_ DATE \_\_\_\_\_

DES W/M	DR	RE J
CHK T/M	DC	

DESIGNER \_\_\_\_\_

REVIEWED BY \_\_\_\_\_

DC \_\_\_\_\_

DESIGN MANAGER \_\_\_\_\_

FIRE PROTECTION \_\_\_\_\_

BRANCH MANAGER \_\_\_\_\_

ENGINEERING DIR. \_\_\_\_\_

DEPARTMENT OF THE NAVY  
NAVAL FACILITIES ENGINEERING COMMAND  
NAVAL FACILITIES ENGINEERING COMMAND - MID-ATLANTIC  
MARINE CORPS NORTH CAROLINA IPT  
MARINE CORPS BASE  
MULTI-PURPOSE MACHINE GUN RANGE  
& ENGINEER TRAINING COMPLEX  
MECHANICAL DETAILS-MPMG  
NAVAL STATION - NORFOLK - VIRGINIA  
CAMP LE JEUNE, NC

CODE ID. NO. 80091 SIZE 0

SCALE \_\_\_\_\_

MAXIMO NO. \_\_\_\_\_

JOB ORDER NO. P-831

SPEC. NO. N/A

CONSTR. CONTR. NO. N/A

NAVFAC DRAWING NO. 12547958

SHEET 141 OF 431

**M-502**

DRAWING REVISION: 01 AUGUST 2004

REVDATE PLOTTED: 14-DEC-2009 FILENAME: M-502 MECHANICAL DETAILS-MPMG.DGN SUBMITTAL: CORRECTED FINAL



